



# Metering fact sheet

## Reading your meter

A water meter is any device for measuring or estimating the volume or flow of water that is approved under the *Rights in Water and Irrigation (Approved Meters) Order 2003*.

Water meters are the most accurate measurement of water use. The data collected can also assist water users in modifying their water-use practices.

Licensees that have had meters installed for some time have made improvements in water use efficiency as they are now able to monitor their water use and irrigation practices to ensure they remain within their licensed entitlements.

Licensees who are required to install a meter as a licence condition may also be required to periodically record their meter readings and provide the information to the Department of Water hence the importance of having to read a water meter.

## Steps for reading your meter

- At the same time each month, take a reading of the black numbers only.
- To find out how much water has been used in a month, subtract the previous month's reading from the current reading.
- To find out how much of the allocation you have used, subtract the current reading from the amount you have been allocated.

*Meter water use cards can be downloaded off the internet at [www.water.wa.gov.au/gnangara/metering](http://www.water.wa.gov.au/gnangara/metering) under the How to read your meter section. You can also contact the metering team and we can arrange to have one sent to you.*



Meinecke meter  
Meter Reading 33 878 kL

## Examples of water meters used



Bermad Turbobar  
Meter reading 129 197 kL



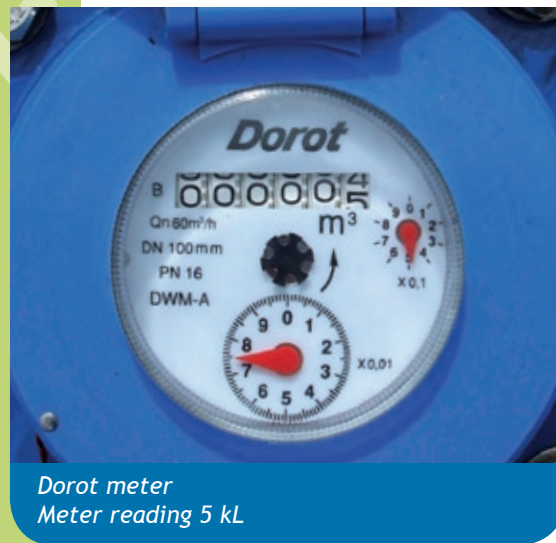
Bermad Turbobar X10 meter  
Meter Reading 295 020 kL



Emflux Irriflow  
Meter reading 42 958 kL



Arad meter  
Meter reading 3 kL



Dorot meter  
Meter reading 5 kL



Triangle meter  
Meter reading 3809 kL

## ► Contacts

Department of Water  
Metering team  
1800 623 983  
metering@water.wa.gov.au

Department of Water  
Swan-Avon Region  
7 Ellam Street  
Victoria Park WA 6100  
Ph: 08 6250 8000  
Fax: 08 6250 8050

Water Dynamics  
17 Kew St  
Welshpool WA 6106  
Ph: 08 9362 1288  
Fax: 08 9361 0599  
www.waterdynamics.com

Hydro Engineering  
8 Vale Street Malaga WA  
Ph: 08 9209 1611  
Fax: 08 9209 1622  
www.hydroeng.com.au

Western Irrigation  
19 Shields Crescent  
Booragoon WA 6154  
Ph: 08 9330 1144  
Fax: 08 9330 5630  
www.wirrig.com.au

## An example of a correct meter installation



A water meter needs to be installed in accordance with the manufacturer's specifications to ensure that it records accurate water usage.

Here there are no off-takes before the meter and there is the required amount of pipe before and after the meter.

The Department of Water's *Guidelines for water meter installations* provides more information on meter installation.



Department of Water  
Government of Western Australia

### MANAGING OUR MOST PRECIOUS RESOURCE

This meter is property of the State Government and plays an important role in managing WA's groundwater.

**It is an offence to tamper with this meter or any of the associated pipework.**

Approval must be obtained from the Department of Water before work is commenced on this meter or pipework.

In an emergency, or for more information, call the Department of Water on –

**1800 623 983.**

*An example of the stickers that will appear on your pipe-work or nearby the installed meter.*